



## Special Packages to Tahiti

Rates are Valid 1 April 2022 to 31 March 2023

Turama Pacific Travel Group are pleased to provide you with **4, 5 and 8 night** packages for Papeete and Moorea, as well as combo packages for stays on both these islands.

These packages have been developed for sales in the Cook Islands and work with the flights between Rarotonga (Cook Islands) and Papeete (Tahiti) .

### TAHITI FLIGHT SCHEDULE:

Flight time to/from Papeete is 2 hours 40 minutes. Flight schedule is as follows;

### TAHITI FLIGHT SCHEDULE:

Flight time to/from Papeete is 2 hours 40 minutes. Flight schedule is as follows;

### RAROTONGA TO PAPEETE

DATE	DEPART	ARRIVE
SAT 27 AUG	2.20 PM	5.00 PM
SAT 03 SEP	11.40 AM	2.05 PM
SAT 10 SEP	4.10 PM	6.35 PM
SAT 17 SEP	4.10 PM	6.35 PM
SAT 24 SEP	4.10 PM	6.35 PM
SAT 01 OCT	11.40 AM	2.05 PM
SAT 08 OCT	2.20 PM	5.00 PM
SUN 16 OCT	11.40 AM	2.05 PM

### PAPEETE TO RAROTONGA

DATE	DEPART	ARRIVE
SUN 28 AUG	8.00 AM	10.40 AM
SAT 03 SEP	8.00 AM	10.40 AM
SAT 10 SEP	12.30 PM	3.10 PM
SAT 17 SEP	12.30 PM	3.10 PM
SAT 24 SEP	12.30 PM	3.10 PM
SAT 01 OCT	8.00 AM	10.40 AM
SUN 09 OCT	8.00 AM	10.40 AM
SUN 16 OCT	8.00 AM	10.40 AM

From 22<sup>nd</sup> October onwards until further notice, flights will operate as follows :

### RAROTONGA TO PAPEETE

DAY	DEPART	ARRIVE
SATURDAYS	2.20 PM	5.00 PM

### PAPEETE TO RAROTONGA

DAY	DEPART	ARRIVE
SUNDAYS	8.00 AM	10.40 AM

## AIRFARES between RAROTONGA and PAPEETE

We can provide e-tickets for travel Papeete Rarotonga Papeete if need at the following costs.

Fare costs below include airport tax of NZ\$ 78.00 p.p. one way from Rarotonga to Papeete, and NZ\$ 52 p.p. one way from Papeete to Rarotonga.

Please add your choice of fares to the total costs of your Cook Island package – we will book these accordingly and email you your tickets and booking confirmation.

### LOCAL SALE ONLY – CANNOT BE SOLD TO TOURISTS – SEAT ONLY AND 7kg CARRY ON

ONE WAY FARES			ADULT	CHILD U12yrs	Infant U2yrs
Rarotonga	to	Papeete	377	303	30
Papeete	to	Rarotonga	351	225	30

### ECONOMY - Seat and Bag (23kg) + 7kg carry-on

ONE WAY FARES			ADULT	CHILD U12yrs	Infant U2yrs
Rarotonga	to	Papeete	477	378	40
Papeete	to	Rarotonga	451	300	40

### FULLY FLEXIBLE - Seat and 2 Bags (23kg) + 7kg carry-on

ONE WAY FARES			ADULT	CHILD U12yrs	Infant U2yrs
Rarotonga	to	Papeete	677	528	60
Papeete	to	Rarotonga	651	450	60

## FARE TERMS & CONDITIONS

Local sales Only Seat and hand luggage only 7 KG

- Limited to 5 seats per flight (until further notice)
- Includes tea/coffee and light snacks during flight.
- Includes Seat and 1x 7kg carry-on bag.
- Fare is non-refundable but may be changed with penalties.

### Economy

- Limited to 17 seats per flight (until further notice)
- Includes tea/coffee and light snacks during flight.
- Includes Seat and 1x 23kg checked-in bag plus 1x 7kg carry-on bag.
- Fare is fully refundable up to 24 hours from flight departure. 50% refund if cancelled or changed less than 24 hours

### Fully Flexible

- Limited to 6 seats per flight (until further notice)
- Includes tea/coffee and light snacks during flight.
- Includes Seat and 2x 23kg checked-in bag plus 1x 7kg carry-on bag.
- Fare is fully refundable up to 2 hours from flights departure. 50% refund if cancelled or changed less than 2 hours before flight departure.

**Extra Baggage Charges** : NZ\$ 120 for first extra bag and N\$ 150 for a 2<sup>nd</sup> extra bag

**NOTE CAREFULLY :**

**PACKAGE PRICES BELOW DO NOT INCLUDE THE AIRFARES RAROTONGA / PAPEETE / RAROTONGA – THESE SHOULD BE ADDED TO THE RELEVANT ACCOMODATION PACKAGE.**

**PRICING IN NEW ZEALAND DOLLARS, PER PERSON**

**4 Night Stay**

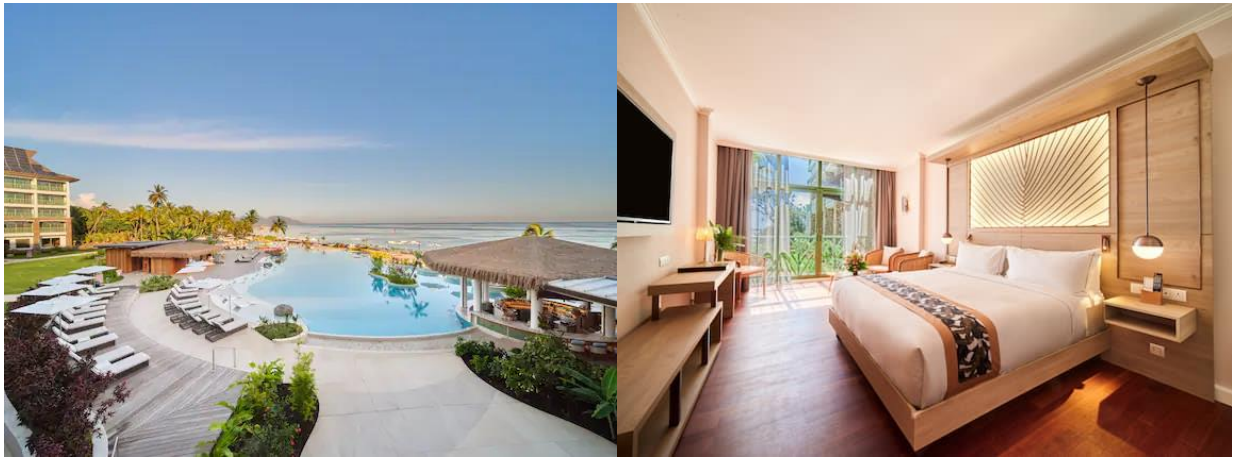
**Tahiti Only**

**WED - SUN **FROM OCT 26****

**THIS PACKAGE INCLUDES :**

- Meet and Greet at international airport with welcome flower lei
- Round trip shared transfers
- 4 nights in hotel & room category with the meal plan mentioned below
- Handling fees
- All taxes except the City Tax collected by the hotel upon Check Out
  - The City Tax applicable per night & Adult from 12years old, is collected on site upon Check Out :
    - Hotels - 200CFP (1,68€) (NZD 2.70)
    - in Moorea, Bora Bora & Huahine ; 150CFP (1,26€) (NZD 2) in other islands.
    - Guest Houses - From 50CFP (0,42 €) to 60CFP (0,50 €) depending on island and/or
  - Cancellation fees
    - 50% within 14-2 days before travel
    - 100% within 2 days

**Option 1 5 star**



**Hotel Hilton Tahiti Resort - Garden View Room with daily Buffet Breakfast included**

**Note : Hotel Hilton Tahiti Resort charges a daily resort Fee per room per night 1368 XPF (11,50 Euro) ( NZD 19)**

VALIDITY DATES	SINGLE	SHARE
August to October 2022	2836	1418
November to 20 December 2022	2580	1290
21 December 2022 to 04 January 2023	2836	1418
05 January to 31 March 2023	2580	1290

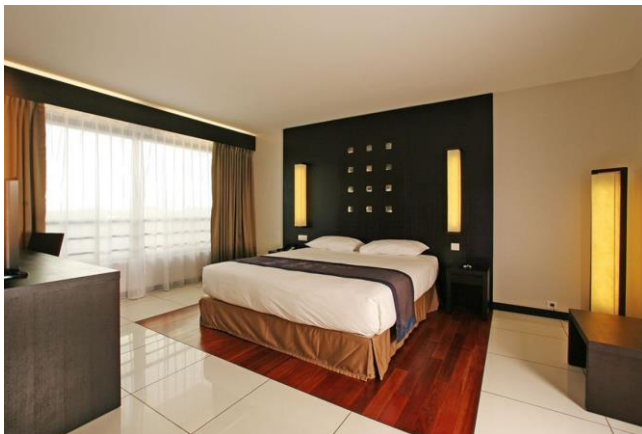
**Option 2 3 star**



**Hotel Te Moana Tahiti Resort - Garden Studio with Continental Breakfasts included**

VALIDITY DATES	SINGLE	SHARE
August to October 2022	2375	1188
November 2022	2285	1143
December 2022 to 31 March 2023	2195	1098

**Option 3 3 star**



**Hotel Tahiti Nui - Standard room Mountain side with Continental Breakfasts included**

VALIDITY DATES	SINGLE	SHARE
All Year	1961	980

**Option 4 Standard**



**Hotel Sarah Nui – standard Room with Queen Bed and daily continental breakfasts**

VALIDITY DATES	SINGLE	SHARE
All Year	1169	585

## 5 Night Stay Tahiti and Moorea Daytour WED – SUN **FROM OCT 26**

### THIS PACKAGE INCLUDES :

- Meet and Greet at international airport with welcome flower lei
- Round trip shared transfers
- 5 nights in hotel & room category with the meal plan mentioned below
- Moorea Lan and Lagoon Tour**
- Handling fees
- All taxes except the City Tax collected by the hotel upon Check Out
  - The City Tax applicable per night & Adult from 12years old, is collected on site upon Check Out :
  - Hotels - 200CFP (1,68€) (NZD 2.70)
  - in Moorea, Bora Bora & Huahine ; 150CFP (1,26€) (NZD 2) in other islands.
  - Guest Houses - From 50CFP (0,42 €) to 60CFP (0,50 €) depending on island and/or

### Option 1 5 star

**Hotel Hilton Tahiti Resort - Garden View Room with daily Buffet Breakfast included**

**Note : Hotel Hilton Tahiti Resort charges a daily resort Fee per room per night 1368 XPF (11,50 Euro) ( NZD 19)**

VALIDITY DATES	SINGLE	SHARE
August to October 2022	4268	2134
November to 20 December 2022	3948	1974
21 December 2022 to 04 January 2023	4268	2134
05 January to 31 March 2023	3948	1974

### Option 2 3 star

**Hotel Te Moana Tahiti Resort - Garden Studio with Continental Breakfasts included**

VALIDITY DATES	SINGLE	SHARE
August to October 2022	3692	1846
November 2022	3580	1780
December 2022 to March 2023	3467	1734

### Option 3 3 star

**Hotel Tahiti Nui - Standard room Mountain side with Continental Breakfasts included**

VALIDITY DATES	SINGLE	SHARE
All Year	3174	1587

### Option 4 Standard

**Hotel Sarah Nui – standard Room with Queen Bed and daily continental breakfasts**

VALIDITY DATES	SINGLE	SHARE
All Year	2185	1093

## 8 Night Stay

## Tahiti Only

**SAT – SUN from AUG and also WED – THU from OCT 26**

### THIS PACKAGE INCLUDES :

Meet and Greet at international airport with welcome flower lei

Round trip shared transfers

8 nights in hotel & room category with the meal plan mentioned below

Handling fees

All taxes except the City Tax collected by the hotel upon Check Out

The City Tax applicable per night & Adult from 12years old, is collected on site upon Check Out :

Hotels - 200CFP (1,68€) (NZD 2.70)

in Moorea, Bora Bora & Huahine ; 150CFP (1,26€) (NZD 2) in other islands.

Guest Houses - From 50CFP (0,42 €) to 60CFP (0,50 €) depending on island and/or

Cancellation fees

50% within 14-2 days before travel

100% within 2 days

### Option 1 5 star

**Hotel Hilton Tahiti Resort - Garden View Room with daily Buffet Breakfast included**

**Note : Hotel Hilton Tahiti Resort charges a daily resort Fee per room per night 1368 XPF (11,50 Euro) ( NZD 19)**

VALIDITY DATES	SINGLE	SHARE
August to October 2022	5446	2723
November to 20 December 2022	4935	2467
21 December 2022 to 04 January 2023	5446	2723
05 January to 31 March 2023	4935	2467

### Option 2 3 star

**Hotel Te Moana Tahiti Resort - Garden Studio with Continental Breakfasts included**

VALIDITY DATES	SINGLE	SHARE
August to October 2022	4525	2263
November 2022	4345	2173
December 2022 to 31 March 2023	4165	2083

### Option 3 3 star

**Hotel Tahiti Nui - Standard room Mountain side with Continental Breakfasts included**

VALIDITY DATES	SINGLE	SHARE
All Year	3696	1848

### Option 4 Standard

**Hotel Sarah Nui – standard Room with Queen Bed and daily continental breakfasts**

VALIDITY DATES	SINGLE	SHARE
All Year	2113	1057

## 8 Night Stay Tahiti and Moorea SAT – SUN from AUG and also WED – THU from OCT 26

### THIS PACKAGE INCLUDES :

- Meet and Greet at international airport with welcome flower lei
- Round trip shared transfers
- 5 nights in Tahiti hotel & room category with the meal plan mentioned below
- 3 nights in Moorea hotel & room category with the meal plan mentioned below
- Round Trip Ferry Tahiti - Moorea-Tahiti
- All taxes except the City Tax collected by the hotel upon Check Out
- Handling fees
  - The City Tax applicable per night & Adult from 12years old, is collected on site upon Check Out :
  - Hotels - 200CFP (1,68€) (NZD 2.70) in Moorea, Bora Bora & Huahine ; 150CFP (1,26€) (NZD 2) in other islands.
  - Guest Houses - From 50CFP (0,42 €) to 60CFP (0,50 €) depending on island and/or

### Option 1 5 star

**Hotel Hilton Tahiti Resort - Garden View Room with daily Buffet Breakfast included**

**Note : Hotel Hilton Tahiti Resort charges a daily resort Fee per room per night 1368 XPF (11,50 Euro) ( NZD 19)**

**Hotel Hilton Moorea Lagoon Resort & Spa - 3 Nights in a Deluxe Garden Pool Bung. with daily American Breakfast included**

**Note : Hotel Hilton Moorea Lagoon Resort & Spa - charges resort Fee per room per night 1500 XPF (11.57 Euro) ( NZD 21)**



Hotel Hilton Moorea Lagoon Resort & Spa

VALIDITY DATES	SINGLE	SHARE
August to October 2022	7661	3831
November to 20 December 2022	6739	3369
21 December 2022 to 04 January 2023	7661	3831
05 January to 31 March 2023	6739	3369



**Option 2 3 star**

**Hotel Te Moana Tahiti Resort - 5 Nights Garden Studio with Continental Breakfasts included**

**Hotel Manava Beach Resort & Spa - 3 Nights in a Garden View Room, with daily American Breakfast included**



Hotel Manava Beach Resort & Spa

VALIDITY DATES	SINGLE	SHARE
August to October 2022	5781	2890
November 2022	5216	2608
December 2022 to March 2023	4863	2431

**Option 3 3 star**

**Hotel Tahiti Nui - 5 Night Standard room Mountain side with Continental Breakfasts included**

**Hotel Hibiscus – 3 Nights in a Garden Bungalow with daily American breakfasts**



VALIDITY DATES	SINGLE	SHARE
All Year	3876	1938

## CANCELLATION FEES

Hilton Tahiti	Within 14 days Within 48 hours	1 Nights fee Full Charge
Te Moana Tahiti	Within 14 days	Full charge
Hotel Tahiti Nui	Within 3 days Within 24 hours	1 Nights fees Full Charge
Hotel Sarah Nui	Within 24 hours	Full Charge
Hilton Moorea	Within 30 days Within 24 hours	50% of accommodation will be charged Full Charge
Manava Moorea	Within 14 days	Full charge
Hibiscus Moorea	Within 7 days	Full charge

RS 21 AUG 2022