



*a selection of*

# Holiday Homes & Villas in Rarotonga & Aitutaki

*Just for you.....*

VALID 1 APRIL 2012 – 31 MARCH 2013





# Rarotonga

Bright, vibrant and bustling with energy and excitement, is the island of Rarotonga. Almost completely encircled by reef, and turquoise lagoons, Rarotonga is only 32km in circumference. The main township and capital of the Cook Islands, Avarua is the commercial centre of the Country boasting a great selection of shops, banks, cafés and craft stores. The two roads of Rarotonga circle the island, making it difficult to get lost and in the centre of the island is a cluster of high mountain peaks where the highest point is 653metres. Vehicles can be hired for your convenience or try the local bus which runs daily. It is most definitely the ideal spot for your romantic or family vacation and with activities galore on both sea and land from mountain hikes, to historic tours, fishing and diving trips to quad bike adventures Rarotonga has something for everyone, of every age.

# Vaka

Rarotonga is divided into three main districts locally known as 'Vaka' which is also the word for a voyaging vessel on which the original settlers arrived in the Cook Islands. The vaka's are Puaikura, Takitumu and Te Au o Tonga with at their head one or more Chief's or 'Ariki'

Legend has it that two of the early settlers to Rarotonga were Tangiia and Karika who arrived together and settled on different sides of the island, Tangiia to the East where he founded the Vaka Takitumu and Karika to the North where he founded the Vaka Te Au o Tonga. The third tribe on the West side of Rarotonga, Puaikura was later founded by Tinomana who was driven out of Takitumu. Tinomana is a direct descendant of Tangiia.



## Location of Available Accommodation

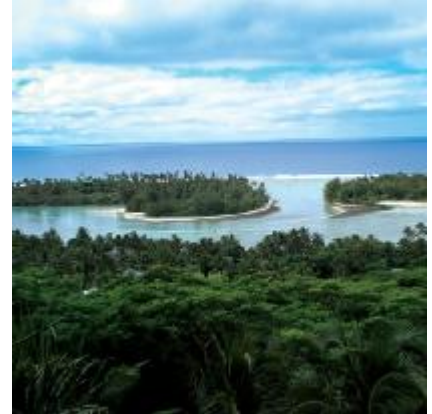
- |                               |                              |
|-------------------------------|------------------------------|
| 1 Anchors Rest                | 14 Napa Beachfront Hideaway  |
| 2 Arapati Beach Bach          | 15 Navigator Villa           |
| 3 Are Tupapa Beach House      | 16 Nikao Beach Bungalows     |
| 4 Aroa 2 Bedroom Cottage      | 17 Oronga Beach Bungalow     |
| 5 Aroa 3 Bedroom Cottage      | 18 Ocean Spray Villas Villas |
| 6 Arorangi Beachfront Studio  | 19 Palm Grove Beach Villa    |
| 7 Arorangi 4 Bedroom Bungalow | 20 Raina Beach House         |
| 8 Bella Beach                 | 21 Rendevous Villas          |
| 9 Blackrock Villas            | 22 Sands Villa               |
| 10 Hawaikii Villas            | 23 Tehora Homestead          |
| 11 Iro's Beach Villa          | 24 Tupe's Beach House        |
| 12 Matahere's Residence       | 25 Vai Villas                |
| 13 Muri Beach Villa           | 26 Villa Maria               |

## Vaka Takitumu

One of Rarotonga's most prominent historical events is the great Polynesian Migration that took place around the 14th century. History has it that the gathering point for all voyaging canoes was Avana Harbour in the District of Takitumu.

The seven most famous canoes that reached Aotearoa were Takitumu, Tokomaru, Kurahaupo, Aotea, Tainui, Te Arawa and Mataatua. A circle of seven stones commemorates these seven canoes at the Avana passage today.

Takitumu is also famous for its four islets located in Muri Lagoon. They are Motutapu, Koromiri, Oneroa and Taakoka. One of these islands is used for modern wedding ceremonies for couples from around the world.



## Vaka Puaikura

The name Puaikura comes from the war of independence from Takitumu - as Puaikura was previously a part of Takitumu.

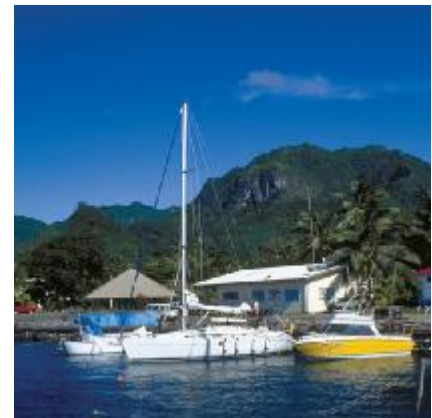
'Pu' refers to a tree trunk, 'a'i' means fire and 'kura' means red or sacred hence 'Puaikura' or the sacred fire from the tree trunk that spelled success in the war of independence.

Puaikura is known for many legends including the story of Raemaru - the flat topped mountain in the middle of the district. Legend has it that the top of this mountain was chopped by some ambitious Aitutaki people who carried it back by their vaka to their island to form the mountain called Maunga Pu the highest peak on Aitutaki.



## Vaka Te Au O Tonga

Te Au o Tonga comprises of 19 villages from Nikao to Tupapa. Rarotonga's main township, Avarua is located in Te Au o Tonga, as well as the main harbour ports and the International Airport. Te Au o Tonga is known for the oldest theological college in the Pacific called Takamoa College built by Rev A Buzacott and fellow missionaries from England in 1845. They built a stone wall enclosing the college and the main residential building which still stands today. Cook Islanders who did mission work in Papua New Guinea, Samoa, and the islands of New Caledonia were trained at the college and the missionary's wives taught writing, arithmetic and needlework. By the 1850's most Rarotongans could read and write. The College also worked to record and print book in Cook Islands Maori, the first Cook Islands Maori books were printed in the 1840s. The Takamoa Theological College is still standing today and continues to teach and train local pastors.



# Rarotonga Properties...

## ANCHOR'S REST

PRICED FROM SGL/DBL: \$330 Per Night (Rate Up To 4 Pax)

On the beachside in Betela, Anchors Rest is perfect for your relaxing island vacation. This large 4 bedroom, 2 bathroom house, is set on an acre of tropical gardens only a few metres from the waters edge. A large verandah looks out towards the expansive lagoon providing a great venue for alfresco dining complete with outdoor furniture. Facilities include TV with selection of DVDs, stereo with CD collection, kayaks, snorkelling equipment, and an office with internet access. Located close to restaurants, convenience stores, and just a 20 minute drive to Rarotonga's main township.

MAXIMUM OCCUPANCY: 9  
MINIMUM NIGHT STAY: 3  
CHILD POLICY: CHILDREN WELCOME  
BEDDING CONFIGURATION: FOUR BEDROOMS  
2 X SPLITTABLE SUPER KING BEDS - 4 X SINGLE BEDS  
INCLUSIONS: KAYAKS & SNORKELLING EQUIPMENT, WELCOME FRUIT BOWL, FRESH VEGETABLE PACK, PANTRY BASICS, BOTTLE OF WINE  
LOCATION: BETELA - MAP LOCATION 1

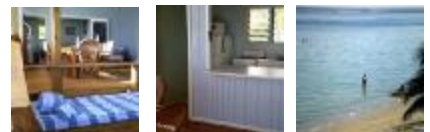


## ARAPATI BEACH BACH

PRICED FROM SGL/DBL: \$245 Per Night

This two storey self contained open plan beach house located right on the beach in Vaimaanga is features a full kitchen with breakfast bar which opens out onto a spacious deck complete with outdoor day bed. Views of the lagoon can be seen through the bay windows in the bedroom, while the outdoor covered dining and living areas create a tropical island style ambience. A second bedroom downstairs, known as the guest room, features a queen bed and private bathroom which opens out onto the beach, and is accessible from the undercover garage with external access, ideal for an extra couple or for older children. Enjoy the feeling of freedom in this very open style property on a wonderful beach location.

MAXIMUM OCCUPANCY: 5  
MINIMUM NIGHT STAY: 4  
CHILD POLICY: NO CHILDREN UNDER 12 YEARS  
BEDDING CONFIGURATION: TWO BEDROOMS  
1 X KING BED - 1 X QUEEN BED - 1 X FUTON SINGLE  
INCLUSIONS: SNORKELLING GEAR, BBQ FACILITIES  
LOCATION: VAIMANGAA - MAP LOCATION 2



## ARE TUPAPA BEACH HOUSE

PRICED FROM SGL/DBL: \$185 Per Night

Located on northern side of island in Tupapa, only 2km from main township of Avarua. set on beachfront with coral swimming beach, Are Tupapa is an upper level home with deck where you can relax and enjoy the views over the lagoon and reef. Modern in design and furnishings this nicely appointed holiday home features a Master Bedroom with ensuite and 2 Double Bedrooms. With large open plan living, kitchen and dining area, fully equipped kitchen with gas hob, microwave, fridge/freezer, TV + DVD player, telephone, washing machine & BBQ, this properties offers all the facilities for an enjoyable 'home away from home' holiday. Due to upper level property with external stairs for access may not be suitable for all.

MAXIMUM OCCUPANCY: 8  
MINIMUM NIGHT STAY: 3  
CHILD POLICY: NO CHILDREN UNDER 12  
BEDDING CONFIGURATION: **THREE BEDROOMS**  
1 X QUEEN BED - 2 X SPLITTABLE KING BED - ROLLAWAYS ON REQUEST  
LOCATION: TUPAPA – MAP LOCATION 3



## ARO A 2 BEDROOM COTTAGE

PRICED FROM: \$200 Per Night (Rate Up To 4 Pax)

The Aroa 2 Bedroom Cottage is perfect for a small family or couple looking for a quiet sanctuary but close to a beautiful beach location. Only a 2 minute walk from the famous Aroa Marine Reserve, on its own private large section, equipped with full kitchen, bathroom, outdoor bbq area, is a great option for the budget conscious traveller. This property is offered through Puaikura Reef Lodges and located approximately 1km away and guests are welcome to use the pool facilities at the lodge.

MAXIMUM OCCUPANCY: 4  
MINIMUM NIGHT STAY: 5  
CHILD POLICY: CHILDREN WELCOME  
BEDDING CONFIGURATION: **2 BEDROOMS**  
1 X QUEEN BED - 2 X SINGLE BEDS  
INCLUSIONS: COMPLIMENTARY TROPICAL BREAKFAST FIRST DAY OF ARRIVAL,  
USE OF SNORKELLING EQUIPMENT & REEF SHOES, FREE SCUBA DIVE  
TRIAL LESSON IN PUAIKURA REEF LODGES POOL,  
COTTAGE SERVICED WEEKLY  
LOCATION: MAP LOCATION 4



## AROA 3 BEDROOM BUNGALOW

PRICED FROM: \$275 Per Night (Rate Up To 4 Pax)

The Aroa 3 Bedroom Bungalow another private home offered through Puaikura Reef Lodges. A spacious home fully equipped with kitchen, bathroom area, outdoor BBQ area and full laundry facilities is suitable for families and small groups. With the Aroa 2 Bedroom Cottage just next door there is access between both properties so an ideal choice for families and groups. Also within 2 minutes from the Aroa Marine Reserve. On its own private section there is plenty of room for the kids to run around and play in the sun.

---

MAXIMUM OCCUPANCY:	8
MINIMUM NIGHT STAY:	5
CHILD POLICY:	CHILDREN WELCOME
BEDDING CONFIGURATION:	<b>THREE BEDROOMS</b> 2 X QUEEN BEDS - 3 X SINGLE BEDS (1 X ROLLAWAY IF REQUIRED)
INCLUSIONS:	COMPLIMENTARY TROPICAL BREAKFAST FIRST DAY OF ARRIVAL, USE OF SNORKELLING EQUIPMENT & REEF SHOES, FREE SCUBA DIVE TRIAL LESSON IN PUAIKURA REEF LODGES POOL, COTTAGE SERVICED WEEKLY
LOCATION:	MAP LOCATION 5

---



## ARORANGI BEACHFRONT STUDIO

PRICED FROM SGL/DBL: \$185 Per Night

This cute little private beachfront studio is attached to the Arorangi 4 Bedroom Beachfront Bungalow. With a fully equipped kitchen, own bathroom, outdoor furniture and BBQ, this unit is ideal for a couple or as an extra unit to add to the 4 Bedroom House. Basic in design however the stunning absolute beachfront location ensures you will enjoy the magical moments of the evening sunsets.

---

MAXIMUM OCCUPANCY:	2
MINIMUM NIGHT STAY:	5
CHILD POLICY:	N/A
BEDDING CONFIGURATION:	<b>STUDIO ROOM</b> 1 X KING BED
INCLUSIONS:	COMPLIMENTARY TROPICAL BREAKFAST FIRST DAY OF ARRIVAL, USE OF SNORKELLING EQUIPMENT & REEF SHOES, FREE SCUBA DIVE TRIAL LESSON IN PUAIKURA REEF LODGES POOL, COTTAGE SERVICED WEEKLY
LOCATION:	MAP LOCATION 6

---



## ARORANGI 4 BEDROOM BEACHFRONT BUNGALOW PRICED FROM: \$344 Per Night (Rate Up To 4 Pax)

Situated 1km from Puaikura Reef Lodges main motel complex the Arorangi 4 Bedroom Beachfront Bungalow is located on a stunning white sandy beach perfect for swimming and snorkeling and a safe place for the kids to swim. Tastefully decorated with island style décor, fully equipped kitchen, laundry, BBQ, TV and DVD player, has all the necessities for a relaxing home away from home holiday. With 4 bedrooms this property can comfortably accommodate up to 10 people so an ideal spot for families and groups.

**MAXIMUM OCCUPANCY:** 10  
**MINIMUM NIGHT STAY:** 5  
**CHILD POLICY:** CHILDREN WELCOME  
**BEDDING CONFIGURATION:** **FOUR BEDROOMS**  
 4 X QUEEN BEDS – 1 X SINGL BUNK BEDS (ROLLAWAY IF REQUIRED)  
**INCLUSIONS:** COMPLIMENTARY TROPICAL BREAKFAST FIRST DAY OF ARRIVAL,  
 USE OF SNORKELLING EQUIPMENT & REEF SHOES, FREE SCUBA DIVE  
 TRIAL LESSON IN PUAIKURA REEF LODGES POOL,  
 COTTAGE SERVICED WEEKLY  
**LOCATION:** MAP LOCATION 7



## BLACKROCK VILLAS PRICED FROM SGL/DBL: \$275 Per Night

Set on the hillside above Black Rock this lovely property offers magnificent views that span out over the lagoon and Pacific ocean. With only 2 villas on site a great spot to enjoy the peace and serenity of the tropical garden soundings. Each villa has two bedrooms each with own ensuite, fully self contained kitchen, large verandah and BBQ area. Enjoy a swim in the infinity saltwater swimming pool. A great place to sit back and watch the stunning evening sunsets.

**MAXIMUM OCCUPANCY:** 6  
**MINIMUM NIGHT STAY:** 3  
**CHILD POLICY:** CHILDREN WELCOME  
**BEDDING CONFIGURATION:** **TWO BEDROOMS**  
 1 X DOUBLE BED - 2 X SINGLE BEDS  
**LOCATION:** MAP LOCATION 9



## BELLA BEACH BUNGALOWS

PRICED FROM SGL/DBL: \$200 Per Night

This 4 bungalow property set on the sandy shores of Titikaveka, can best be described as charming and quaint. Each studio style bungalow looks out to the blue lagoon of Titikaveka and is fully furnished with all the comforts of home with separate bedroom, full kitchen, stereo. Each bungalow opens out to a comfortable deck complete with outdoor furniture and sun loungers and hammocks. Convenience stores are within walking distance, and with such a great beachfront location Bella Beach will captivate you.

MAXIMUM OCCUPANCY: 2 PER BUNGALOW  
MINIMUM NIGHT STAY: 2  
CHILD POLICY: NO CHILDREN  
BEDDING CONFIGURATION: ONE BEDROOM  
1X SPLITTABLE KING BED  
INCLUSIONS: KAYAKS, BBQ FACILITIES  
LOCATION: TITIKAVEKA – MAP LOCATION 8

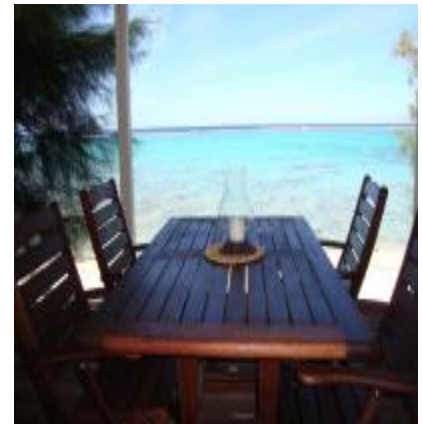


## HAWAIKII VILLAS

PRICED FROM SGL/DBL: \$325 Per Night

These 2 villas are set on the breath-taking Titikaveka Beach House on the south east side of Rarotonga. Both villas are modern and tastefully decorated with a modest touch of polynesian décor. Fully equipped with kitchen and open plan style a lovely spot to relax on the deck in the evening or spend the days snorkelling in the stunning turquoise lagoon place.

MAXIMUM OCCUPANCY: 4  
MINIMUM NIGHT STAY: 3  
CHILD POLICY: CHILDREN WELCOME  
BEDDING CONFIGURATION: TWO BEDROOMS  
2 X QUEEN SIZE BEDS (CAN BE SPLIT TO SINGLES)  
INCLUSIONS: WELCOME FRUIT PLATTER ON ARRIVAL, USE OF KAYAKS & SNORKELLING GEAR  
LOCATION: MAP LOCATION 10



# IRO'S BEACH VILLA PRICED FROM SGL/DBL: \$290 Per Night

Polynesian inspired, this 2 bedroom self contained beach house is well situated on the beach of Titikaveka enjoying perfect lagoon views and surround by a large property which is fantastic for hosting weddings or any other family gatherings. Iro's Beach Villa is complimented by a large deck with sun loungers, kayaks and snorkelling equipment. There are also BBQ facilities and outdoor furniture so you can experience typical tropical indoor / outdoor living, while enjoying the breathtaking views. Iro's Beach Villa is well suited for couples or families travelling together.

MAXIMUM OCCUPANCY: 4  
 MINIMUM NIGHT STAY: 7  
 CHILD POLICY: NO CHILDREN UNDER 12 YEARS  
 BEDDING CONFIGURATION: **TWO BEDROOMS**  
 2 X SPLITTABLE KING BEDS  
 INCLUSIONS: WELCOME FRESH FRUIT BASKET, BOTTLED WATER, MILK AND JUICE,  
 SNORKELLING EQUIPMENT, KAYAK, BBQ FACILITIES  
 LOCATION: TITIKAVEKA – MAP LOCATION 11



# MATAHERE'S RESIDENCE PRICED FROM SGL/DBL: \$550 Per Night (Per Floor)

A spacious grand manor located inland Muri, only 5 minutes stroll from the main road is Matahere's Residence. With the property located inland it offers guest a quiet tranquil stay. This 2 floor property is modern in design with Polynesian furnishings throughout the house ranging from paintings to bed linen. Each floor level has open plan full kitchen with all amenities, dining and living area, and 4 large bedrooms, 3 of which have their own ensuite. A great feature of this property is its front and back wide open porches with BBQ. A great option for those travelling as small groups of families and friends as can host a total of 16 pax when booking both levels.

MAXIMUM OCCUPANCY: 8 PER FLOOR  
 MINIMUM NIGHT STAY: 7  
 CHILD POLICY: CHILDREN WELCOME  
 BEDDING CONFIGURATION: **FOUR BEDROOMS ON EACH LEVEL**  
 EITHER 2 X QUEEN BED OR 4 X SINGLE BEDS PER ROOM  
 LOCATION: MURI – MAP LOCATION 12



## MURI BEACH VILLA

PRICED FROM SGL/DBL: \$1100 Per Night (Rate Up To 6 Pax)

Located right on the beach in Muri this is a secluded Villa with modern, spacious and an open living design. Equipped with all the contemporary home kitchen necessities, a large dining area, large plasma TV, satellite access, theatre sound system, CD/DVD Stereo and air-conditioned bedrooms. As well as a gazebo and fresh water swimming pool on top of a private terrace that overlooks the beach offering spectacular views across the lagoon to the Motus.

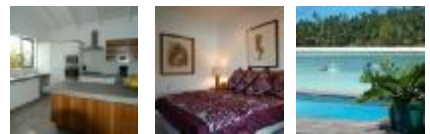
.....

**MAXIMUM OCCUPANCY:** 6  
**MINIMUM NIGHT STAY:** 3  
**CHILD POLICY:** CHILDREN WELCOME  
**BEDDING CONFIGURATION:** **THREE BEDROOMS**  
 3 X SPLITTABLE KING BEDS

**INCLUSIONS:** VIP AIRPORT TRANSFERS WITH MEET & GREET WELCOME EI, WELCOME FRUIT PLATTER & BREAKFAST STARTER PACK ON ARRIVAL, KAYAKS & SNORKELLING EQUIPMENT, BBQ FACILITIES

**LOCATION:** MURI – MAP LOCATION 13

.....



## NAPA BEACH BUNGALOWS

PRICED FROM SGL/DBL: \$185 Per Night

This 3 bungalow property is perfect for a quaint and private beachside escape. With the beach on your doorstep and just 10 minutes from Rarotonga's main township, Napa Beachfront Hideaway is the ideal alternative to hotel living. Each bungalow is fully self contained with a private balcony overlooking the lagoon and the property is the perfect spot for sitting back to watch the sun set. Set amongst tropical gardens right on the beach and away from the main road you can enjoy the feeling of seclusion but still be so close to everything you need.

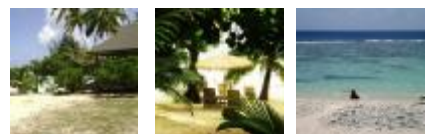
.....

**MAXIMUM OCCUPANCY:** 3  
**MINIMUM NIGHT STAY:** 3  
**CHILD POLICY:** CHILDREN ACCEPTED ON REQUEST AND SUBJECT TO OCCUPANCY  
**BEDDING CONFIGURATION:** **STUDIO ROOM**  
 1 X DOUBLE BED, 1 X SINGLE BED IF REQUIRED

**INCLUSIONS:** BASKET OF FRESH TROPICAL FRUITS ON ARRIVAL

**LOCATION:** BLACK ROCK – MAP LOCATION 14

.....



# NAVIGATOR VILLA

PRICED FROM SGL/DBL: \$390 Per Night

Beautiful and private, The Navigator Villa is located right on Muri Lagoon and comes complete with private pool and deck area. This stylish open plan 2 bedroom villa enjoys excellent views of Rarotonga's famous lagoon and with its large full kitchen, dining and living areas spilling out onto the deck, the navigator villa creates the perfect spot for your relaxing holiday. Ideal for couples or friends travelling together, and families with older children.



MAXIMUM OCCUPANCY: 5  
MINIMUM NIGHT STAY: 4  
CHILD POLICY: NO CHILDREN UNDER 12 YEARS  
BEDDING CONFIGURATION: **TWO BEDROOMS**  
2 X SPLITTABLE KING BEDS  
INCLUSIONS: KAYAKS, SNORKELLING EQUIPMENT, BBQ FACILITIES  
LOCATION: MURI - MAP LOCATION 15.



# NIKAO BEACH BUNGALOWS

PRICED FROM SGL/DBL: Studio Bungalow \$140 Per Night  
Family Bungalow \$205 Per Night

These three self contained villas are situated on a private white sandy beach with magnificent lagoon views. 2 studio bungalows and 1 family bungalow with 2 bedrooms compliment the secluded property. Each villa has all the comforts of home, including super king beds for that comfortable nights rest, TV/DVD player and full kitchen facilities. All bungalows have decks providing perfect views over the lagoon and creating the perfect spot for an evening sunset cocktail. Centrally located across the road from a 24hr petrol station, pharmacy and DVD rental and just minutes from Rarotonga's main township.



MAXIMUM OCCUPANCY: 2 IN STUDIO BUNGALOWS  
4 IN FAMILY BUNGALOW  
MINIMUM NIGHT STAY: 3  
CHILD POLICY: NO CHILDREN UNDER 12 YEARS  
BEDDING CONFIGURATION: **STUDIO BUNGALOW**  
1 X SPLITTABLE KING BED  
**FAMILY BUNGALOW TWO BEDROOMS**  
1 X KING SIZE BED - 2 X SINGLE BEDS  
LOCATION: NIKAO - MAP LOCATION 16.



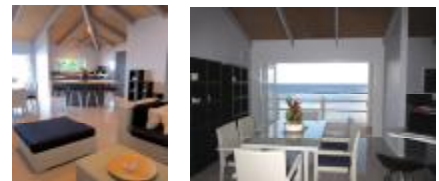
## OCEAN SPRAY VILLA

PRICED FROM SGL/DBL: \$275 Per Night

Located on the waters edge in Tupapa, this lovely elevated 3 bedroom villa offers superb views over the passing vaka's cruise and fishing boats, and if seasonal you may see the whales passing by. Modern and tastefully decorated, with fully equipped kitchen, 3 spacious bedrooms and large open plan living area opening onto deck Ocean Spray Villas is hidden gem, a wonderful option for small groups and families. Although coral sandy rock beach can be swimmable tide dependent. Conveniently located close to Avarua township.



MAXIMUM OCCUPANCY: 6  
MINIMUM NIGHT STAY: 2  
CHILD POLICY: CHILDREN WELCOME  
BEDDING CONFIGURATION: **THREE BEDROOMS**  
1 X SUPER QUEEN BED – 2 X SPLITTABLE KING BED  
LOCATION: MAP LOCATION 18



## ORONGA BEACH BUNGALOW

PRICED FROM SGL/DBL: \$250 Per Night

Offering privacy, seclusion, and beautiful white sandy beach then Oronga Beach is the place for you. This modern two bedroom home is conveniently located on a large section just steps from the sandy beach and blue Arorangi Lagoon. Fully self contained, including insect screens, ceiling fans, TV, mini stereo, BBQ facilities and private parking, guests are likely to spend hours on the beach or on Oronga's large deck with views of the lagoon. Perfect for family BBQ's or drinks and nibbles. Centrally located provides quick access to shops, restaurants, and is a convenient 17 minutes from Rarotonga International Airport.



MAXIMUM OCCUPANCY: 4  
MINIMUM NIGHT STAY: 3  
CHILD POLICY: CHILDREN WELCOME.  
BEDDING CONFIGURATION: **TWO BEDROOMS**  
2 X QUEEN BED OR 4 X SINGLE BEDS  
LOCATION: ARORANGI – MAP LOCATION 17



## PALM GROVE BEACH VILLA

PRICED FROM SGL/DBL: \$660 Per Night (Rate Up To 4 Pax)

The Beach Villa is located on a stunning white sand beachfront in Vaimangaa. With a total of three bedrooms and two bathrooms this villa is ideal for couples and families travelling together. With a private yard, full kitchen, spacious living and dining area opening out onto a covered deck with outdoor dining furniture a superb spot to sit back and BBQ in the evenings, whilst enjoying the magical lagoon views before your eyes.

---

MAXIMUM OCCUPANCY: 6  
MINIMUM NIGHT STAY: 3  
CHILD POLICY: CHILDREN WELCOME  
BEDDING CONFIGURATION: **THREE BEDROOMS**  
MASTER BEDROOM – 1 X KING BED  
BEDROOM ONE & TWO – 1 X KING OR 2 X SINGLE BEDS  
(EXTRA SINGLE BEDS OR COT ON REQUEST)  
LOCATION: MAP LOCATION

---



## RAINA BEACH HOUSE

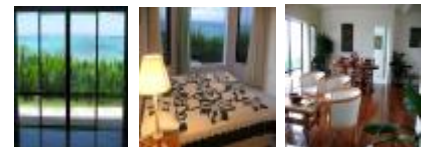
PRICED FROM SGL/DBL: \$200 Per Night

Set on one of the best snorkelling beaches located in Titikaveka, Raina Beach House offers 3 bedrooms and accommodates up to 6 people. A basic holiday home with full kitchen facilities, 2 bathrooms, laundry facilities, BBQ and snorkelling and kayak equipment. Suitable for families and a great spot to enjoy the magic of the blue lagoon.

---

MAXIMUM OCCUPANCY: 6  
MINIMUM NIGHT STAY: 2  
CHILD POLICY: CHILDREN WELCOME  
BEDDING CONFIGURATION: **THREE BEDROOMS**  
2 X KING SIZE BED – 1 X QUEEN SIZE BED – COT AVAILABLE  
LOCATION: MAP LOCATION

---



## RENDEVOUS VILLAS

PRICED FROM SGL/DBL: \$535 Per Night

Situated on a picturesque beachfront location at the southern end of Muri Lagoon, Rendezvous Villas are two duplex, one bedroom villas, with direct access to the beach and excellent views of the lagoon. Each Villa is completely secluded with its own surrounding courtyard. Modern and pacific in style, villas are extremely generous in size and are equipped with all the essentials and much more. Laze away on the "Right on the beach" patios with BBQ area or soak in the warm pacific sun in the secluded plunge pool at each villa. Each villa has surround sound home theatre systems with complimentary DVD movies. Wake up to views of the beach, lagoon and ocean from your King size bed. A stunning location.



MAXIMUM OCCUPANCY:	3 PER VILLA
MINIMUM NIGHT STAY:	3
CHILD POLICY:	NO CHILDREN UNDER 12 YEARS
BEDDING CONFIGURATION:	<b>ONE BEDROOM</b> 1 X SPLITTABLE SUPER KING BED
INCLUSIONS:	VIP AIRPORT TRANSFERS WITH MEET & GREET WELCOME EI, WELCOME FRUIT PLATTER, & BREAKFAST STARTER PACK ON ARRIVAL, KAYAKS & SNORKELLING EQUIPMENT
LOCATION:	MURI – MAP LOCATION 13



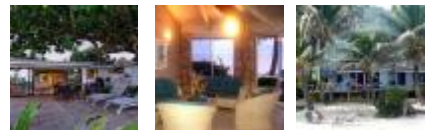
## SANDS VILLA

PRICED FROM SGL/DBL: \$499 Per Night (Rate Up To 4 Pax)

Three lovely villas located on the white sandy beach of Titikaveka. Sands Villa is your ultimate in beachfront villa experiences. These spacious villas has three bedrooms and two bathrooms, private decking for outdoor living and views of the endless lagoon. Designed with all the comforts of home, Sands Villa is the perfect choice for your tropical beachside holiday and with one of Rarotonga's best snorkelling and swimming spots at your doorstep, not only will you love it, you will be planning your next visit to Rarotonga sooner than you think.



MAXIMUM OCCUPANCY:	6 PER VILLA
MINIMUM NIGHT STAY:	3
CHILD POLICY:	CHILDREN WELCOME
BEDDING CONFIGURATION:	<b>THREE BEDROOMS</b> 2 X SPLITTABLE KING BEDS - 2 X SINGLE BEDS
INCLUSIONS:	DAILY RENTAL CAR WITH UNLIMITED KILOMETERS, WELCOME BREAKFAST BASKET, COMPLIMENTARY SNORKELLING EQUIPMENT, KAYAK, PERSONAL ORIENTATION
LOCATION:	TITIKAVEKA BEACH I – MAP LOCATION 14



# TEHORA HOMESTEAD

PRICED FROM SGL/DBL: \$215 Per Night (Rate Up To 6 Pax)

Originally a family home, this very large 4 bedroom house is located in Turangi, on the outskirts of Rarotonga's famous Muri. Set inland amongst tropical gardens and lush green scenery and just 2 minutes drive to Muri lagoon, Tehora is close to popular restaurants and bars, convenience and craft stores, DVD rentals and cafes. Tehora Homestead features four large bedrooms each complete with TV's, a lounge and dining area with an extensive range of DVD's. Full kitchen including breakfast bar, indoor and outdoor bathrooms, a large veranda and BBQ deck, a mobile bar and even a pool table. A basic and affordable property for the budget conscious traveller.

MAXIMUM OCCUPANCY: 8  
 MINIMUM NIGHT STAY: 1  
 CHILD POLICY: CHILDREN WELCOME  
 BEDDING CONFIGURATION: **FOUR BEDROOMS**  
 4 X DOUBLE POSTER BEDS  
 INCLUSIONS: DVD AND GAME LIBRARY, POOL TABLE, BBQ FACILITIES  
 LOCATION: TURANGI - MAP LOCATION 15

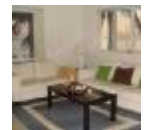


# TUPE'S BEACH HOUSE

PRICED FROM SGL/DBL: \$280 Per Night

Nicely appointed 2 bedroom modern home on the stunning Titikaveka beachfront location. The property has a large private grass yard great for wedding receptions, and for hosting summer BBQ's with the family. Includes TV/DVD, stereo, full kitchen and BBQ on porch. Property offers complimentary kayaks and snorkelling gear located at Palm Grove Lodges. Guests staying at Tupe's can use the swimming pool at Palm Grove Lodges complimentary. A great spot right on the beach.

MAXIMUM OCCUPANCY: 4  
 MINIMUM NIGHT STAY: 3  
 CHILD POLICY: CHILDREN WELCOME  
 BEDDING CONFIGURATION: **TWO BEDROOMS**  
 1 X QUEEN BED - 2 X SINGLE BEDS  
 INCLUSIONS: DAILY TROPICAL BREAKFAST  
 BONUS OFFER: STAY 7 NIGHTS PAY ONLY 6 NIGHTS  
 LOCATION: ARORANGI - MAP LOCATION 16

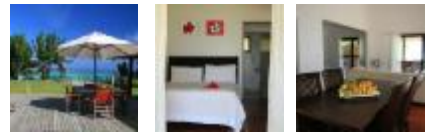


## VAI VILLAS

PRICED FROM SGL/DBL: \$260 Per Night

Two nicely appointed villas situated beachfront on the beautiful Titikaveka lagoon on a quiet peaceful beach location. Each Villa has one bedroom with a queen bed, air-conditioning, fully equipped kitchen with amenities, home theatre system with DVD, VCD and TV. The Villas are separated by a large wide deck which is great for families and friends who wish to book both villas. Privacy screens are raised if you only require one villa. The large lawn area to the beach is a perfect location for a wedding.

MAXIMUM OCCUPANCY: 3  
MINIMUM NIGHT STAY: 3  
BEDDING CONFIGURATION: **ONE BEDROOM**  
1 X QUEEN BED – 1 X DOUBLE SOFA BED  
CHILD POLICY: CHILDREN WELCOME  
INCLUSIONS: WELCOME FRUIT BASKET  
LOCATION: TITIKAVEKA – MAP LOCATION 17



## VILLA MARIA

PRICED FROM SGL/DBL: \$550 Per Night

A beautiful 3 bedroom private home located Muri Hillside. A spacious home with stylish décor throughout, large outside deck area with BBQ facilities and dining table for entertaining. A great attribute of this property is the good sized swimming pool overlooking the Muri lagoon and its islets. The main kitchen and lounge area is located on the top level whilst a small kitchenette is located on the second level in between the two other bedrooms. Each bedroom has its own en suite which is always an added benefit. Villa Maria not suitable for elderly or those with walking difficulties due to staircase. Property will only accept children 16 years and over. A stunning villa with superb views.

MAXIMUM OCCUPANCY: 6  
MINIMUM NIGHT STAY: 3  
CHILD POLICY: NO CHILDREN UNDER 16 YEARS  
BEDDING CONFIGURATION: **THREE BEDROOMS**  
1 X SPLITTABLE KING BED – 1 X KING BED, 1 X QUEEN BED  
INCLUSIONS: WELCOME FRUIT BOWL  
BONUS OFFER: STAY 7 NIGHTS PAY ONLY 6 NIGHTS  
LOCATION: MURI – MAP LOCATION 18





# Aitutaki

Aitutaki is one of the Cook Islands, north of Rarotonga is famous for its turquoise central lagoon uninhabited islands and palm-fringed beaches an advantage that has been spared by mass tourism. Aitutaki has 15 small islets and a main volcanic island with a height of 123 meters; it has a population of approximately 2300. The main island is situated in the middle of a huge lagoon, covering a vast expanse, measuring some 12,500 acres. It is 20 kilometres at its widest point and surrounded by many tiny islets called motu. Aitutaki is the second most visited island of the Cook Islands.

The capital (main village) is Arutanga on the west side it is also the commercial centre of the Island boasting shops, banks, cafes & crafts stores. Aitutaki is subdivided in 8 districts. The eight villages are Arutanga, Amuri, Ureia, Reureu, Nikaupara, Vaipae, Tautu, Vaipeka.

Aitutaki is served by Air Rarotonga, which offers several small plane flights from Rarotonga each day; the flight usually takes about 45 minutes.



## Location of Available Accommodation

- A Amuri Pool Villa
- B Are Kapapa
- C Aretai Beach Villa
- D Ootu Beach House
- E Aitutaki Ootu Villa
- F Paparei Bungalows

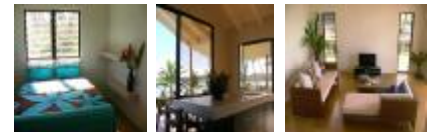
# Aitutaki Properties...

## AITUTAKI OOTU VILLA

PRICED FROM SGL/DBL: \$300 Per Night

Situated on the eastern side of Aitutaki, the newly built Aitutaki Ootu Villa is a 3 bedroom open plan holiday home. Offering stunning views across the lagoon and a few metres away from the waters edge take a swim in the lagoon, and sit back on the deck and enjoy the outdoor living. Modern and tastefully decorated with fully self contained spacious kitchen and living area and three separate bedrooms the villa can accommodate up to 6 people. A great spot to kick back and relax.

MAXIMUM OCCUPANCY: 6  
MINIMUM NIGHT STAY: 2  
CHILD POLICY: CHILDREN WELCOME  
BEDDING CONFIGURATION: **THREE BEDROOMS**  
1 X KING SIZE BED – 1 X QUEEN SIZE BED – 2 X KING SINGLE BEDS  
LOCATION: MAP LOCATION

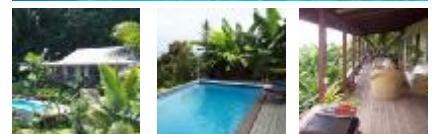


## AMURI POOL VILLA

PRICED FROM SGL/DBL: \$200 Per Night

A private home located on the hillside offering privacy and seclusion. With 4 bedrooms, full kitchen, laundry, TV, CD & DVD Player, enjoy the comforts of this 'home away from home'. A lovely swimming pool awaits where you can take up refreshing dip. With 2 master bedrooms, one with ensuite and 2 additional bedrooms with single beds Amuri Pool Villa is a perfect spot for families and small groups of up to 8. Set in lovely tropical gardens and surroundings with beautiful sunset views.

MAXIMUM OCCUPANCY: 8  
MINIMUM NIGHT STAY: 3  
CHILD POLICY: CHILDREN WELCOME  
BEDDING CONFIGURATION: **FOUR BEDROOMS**  
2 X DOUBLE BEDS – 4 X SINGLE BEDS  
LOCATION: MAP LOCATION A



## ARE KAPAKAPA

PRICED FROM SGL/DBL: \$195 Per Night (Rate Up To 4 Pax)

Are Kapakapa is a private holiday home situated on the north eastern side of Aitutaki and within walking distance of stunning beach and lagoon locations. A lovely open plan spacious home with 2 bedrooms, full kitchen amenities and a large open verandah area perfect for outdoor dining and relaxing in the evenings where you can enjoy the calm and peaceful surroundings.

MAXIMUM OCCUPANCY: 4  
MINIMUM NIGHT STAY: 3  
CHILD POLICY: CHILDREN WELCOME  
BEDDING CONFIGURATION: **TWO BEDROOMS**  
2 X SPLITTABLE KING BEDS - PORTABLE COT AVAILABLE ON REQUEST  
LOCATION: MAP LOCATION B



## ARETAI BEACH VILLAS

PRICED FROM SGL/DBL: \$300 Per Night

Three attractive stand alone villas located on a magnificent stretch of white sandy beach. The Villas are self catering with full modern kitchen and amenities, a spacious living area opening onto a large sun deck overlooking the lagoon. A great choice for couples or small families travelling together. A lovely little property on a stunning location.

MAXIMUM OCCUPANCY: 4  
MINIMUM NIGHT STAY: 3  
CHILD POLICY: CHILDREN WELCOME  
BEDDING CONFIGURATION: **STUDIO ROOM**  
1 X QUEEN BED - 2 X SINGLE BEDS  
INCLUSIONS: KAYAKS & BBQ FACILITIES  
LOCATION: MAP LOCATION C



## OOTU BEACH HOUSE

PRICED FROM SGL/DBL: \$250 Per Night

Located on one of the best lagoons and swimming spots on the northern tip of Aitutaki Ootu Beach House offers the perfect spot to enjoy the beauty of the stunning lagoon. A basic property with all the necessities you need for a relaxing holiday. There are two bedrooms, one with a king size bed and the other has two single beds, full kitchen facilities including a fridge and freezer and laundry. A BBQ is available on request.

---

MAXIMUM OCCUPANCY:	6
MINIMUM NIGHT STAY:	2
CHILD POLICY:	CHILDREN WELCOME
BEDDING CONFIGURATION:	<b>TWO BEDROOMS</b> 1 X KING BED - 2 X SINGLE BEDS
INCLUSIONS:	USE OF KAYAKS FROM SAMADE ON THE BEACH
SPECIAL OFFER:	STAYS 7 NIGHTS OR MORE AND RECEIVE ONE FREE NIGHT
LOCATION:	MAP LOCATION D

---



## PAPAREI BUNGALOWS

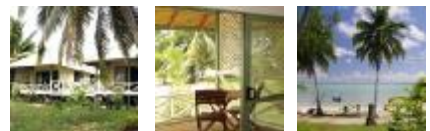
PRICED FROM SGL/DBL: \$225 Per Night

Two lovely free standing bungalows set close to the water's edge offer the perfect holiday destination for those looking to relax and enjoy in peaceful surroundings. Each bungalow is equipped with a large separated bedroom, lounge, dining area, kitchenette and deck where you can sit back and enjoy the magical evening sunsets.

---

MAXIMUM OCCUPANCY:	3
MINIMUM NIGHT STAY:	1
CHILD POLICY:	CHILDREN WELCOME
BEDDING CONFIGURATION:	<b>ONE BEDROOM</b> 1 X QUEEN BED – 1 X SOFA BED
INCLUSIONS:	BBQ FACILITIES
LOCATION:	MAP LOCATION E

---



# Booking Conditions

---

## Brochure Validity Period

This brochure is valid for sales and travel from 01 April 2012 to 31 March 2013 unless otherwise stated.

---

## Price Changes

All prices are accurate at time of publication, and have been negotiated for the period of rate validity.

Turama Pacific Travel Group must, in today's economic climate, reserve the right to pass on any rate increases, air fare increases, or Government Taxes that are forced upon us during the rate period.

---

## Deposits And Final Payments

Upon confirmation of you're booking a 25% deposit will be deducted from your credit card with the remainder to be paid in full 30 days prior to arrival.

If you would prefer to complete a Telegraphic transfer please contact us for our account details upon booking request.

---

## Cancellations

All cancellations must be advised in writing. The following standard cancellation fees apply:

Cancellations over 30 days before arrival:	NO CHARGE
Cancellations 16 to 30 days before arrival:	1 Night charge per property
Cancellations 15 to 7 days before arrival:	2 Night charge per property
Cancellations within 7 days of arrival:	Full payment less any nights re-sold

Please note some property cancellation policies may differ from the above and will be advised at time of booking enquiry.

---

## Limitations

Turama Pacific Travel Group, including its staff, servants, agents and / or employees, act as agents for the airlines, hoteliers, motellers, transport companies and / or other contractors providing accommodations, transportation and other services as set out in this brochure.

All vouchers are issued subject to the terms and conditions of the operator(s) for which these vouchers are issued or made out to. Turama Pacific Travel Group is only an agent for these operators and in that respect, we shall not be held liable for any act or omission outside of its control, howsoever arising, including death or Injury to any person, loss or damage to any property, or otherwise, arising out of, or in conjunction with any accommodation, transportation, or any other such service. Island Hopper Vacations cannot be held responsible for events outside of its control, such as strikes, riots, acts of God, theft, pilferage, changes.